

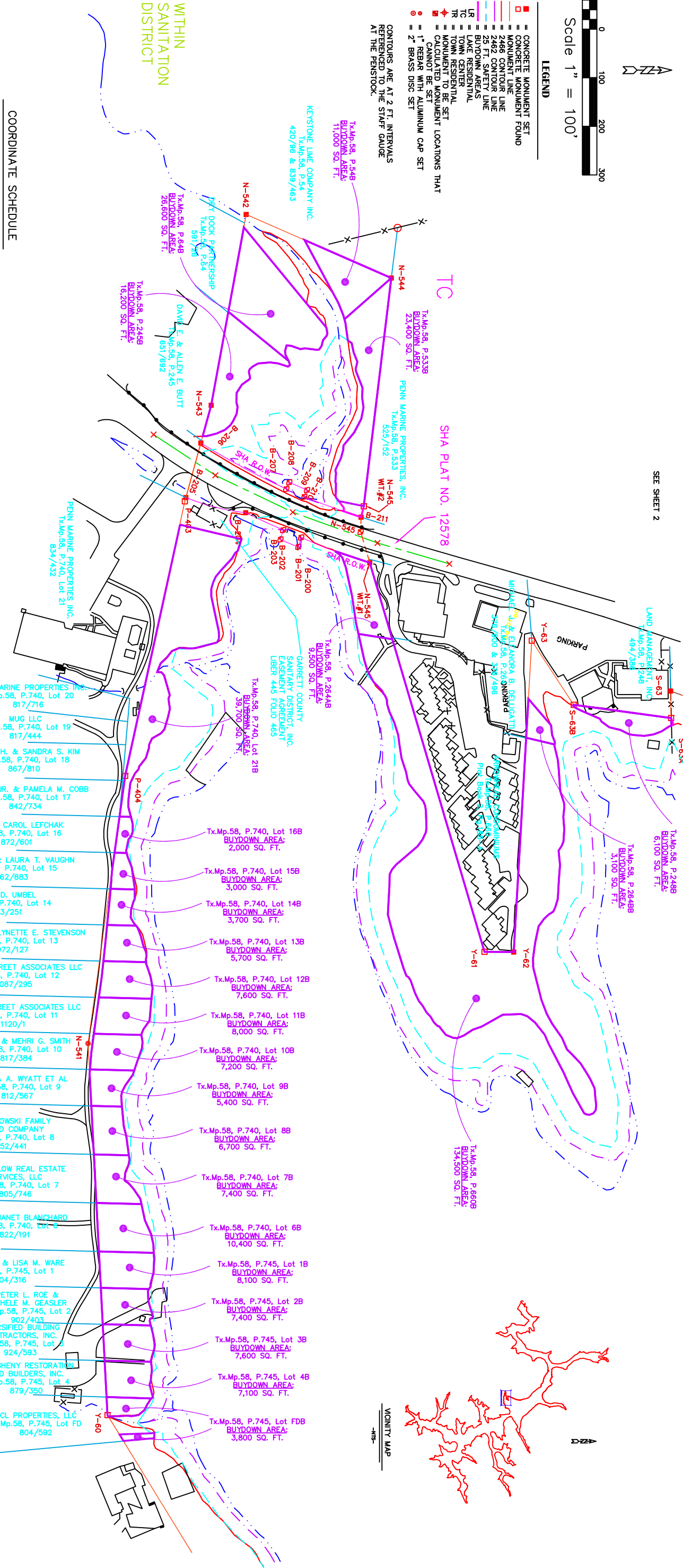


Scale 1" = 100'

LEGEND

- CONCRETE MONUMENT SET
- MONUMENT LINE
- 2486 CONTOUR LINE
- 2482 CONTOUR LINE
- 23 FT. SHEET LINE
- 23 FT. MONUMENT LINE
- LAKE RESIDENTIAL
- TR = TOWN RESIDENTIAL
- TC = TOWN CENTRAL
- MONUMENT TO BE SET
- MONUMENT TO BE SET CANNOT BE SET
- 1" REBAR WITH ALUMINUM CAP SET
- 2" BRASS DISC SET

CONTIGUOUS ARE AT 2 FT. INTERVALS REFERENCED TO THE STAFF GAUGE AT THE PENNSYLVANIA



COORDINATE SCHEDULE

Mon.	North	East
N545	677277.53	656106.95
B211	677259.63	656013.22
P403	676896.72	655980.56
N542	677023.07	655390.29
Y60	676737.45	657661.24
Y63	677811.21	656267.54
S63B	677897.50	656399.43
S63A	677898.12	656428.67
P404	67673.69	656545.97
N544	677321.85	655521.06
N545	677258.77	656043.36
Y62	677574.02	656908.25
N541	676697.42	657096.38
B204	677022.10	656004.11
B203	677099.25	656038.75
B202	677152.70	656024.14
B201	677136.22	656055.03
N543	677895.94	655782.95
B208	677148.55	655957.46
B210	677142.77	655971.30
B208	677111.87	655941.52
B207	677105.70	655955.20
B206	676898.63	655980.61
N545	676898.64	655972.85
N545	677895.16	655990.90
S63	677897.03	655971.03

PENELEC CALLS

CONC.MON. NO.	BEARING	DISTANCE
Y-59	S 56° 50' W	603.30 FT.
Y-60	S 84° 51' W	782.50 FT.
N-541	N 84° 18' W	553.20 FT.
P-404	N 78° 46' W	577.80 FT.
P-403	N 75° 22' W	203.10 FT.
N-543	N 80° 18' W	395.70 FT.
N-542	N 22° 31' E	327.00 FT.
N-544	S 53° 53' E	515.70 FT.
N-545	N 73° 27' E	897.30 FT.
Y-61	N 03° 21' E	80.00 FT.
Y-62	N 03° 21' E	80.00 FT.
Y-63	N 87° 19' W	640.60 FT.
S-63B	N 56° 32' E	157.63 FT.
S-63A	N 07° 01' E	201.52 FT.
S-63	S 88° 11' W	55.60 FT.
S-63A	N 19° 14' E	150.10 FT.

SURVEY CALLS

CONC.MON. BEARING	DISTANCE
Y59-960	S 58°28' W 607.88'
Y60-N541	S 87°00' E 765.57'
N541-P404	S 82°07' E 555.67'
P404-P403	N 77°43' W 578.64'
P403-P205	N 74°39' W 67.00'
N14113E	N 14°13' E 127.16' RADIUS 470.00'
N2448E	N 24°48' E 84.99' RADIUS 1472.39'
S 74°04' E	S 74°04' E 20.16'
N 28°22' E	N 28°22' E 40.00' RADIUS 1492.39'
N 74°05' W	N 74°05' W 20.10'
N 20°10' E	N 20°10' E 190.35' RADIUS 1472.39'
N 73°34' E	N 73°34' E 834.90'
N 00°30' E	N 00°30' E 60.23'
N 86°41' W	N 86°41' W 641.79'
Y62-Y63	Y62-Y63 641.79'
Y63-S63B	Y63-S63B 157.62'
S63B-S63A	S63B-S63A 202.45'
S63A-S63	S63A-S63 55.60'
S63-S64C	S63-S64C 149.36'

SURVEY CALLS

CONC.MON. BEARING	DISTANCE
N542-N544	N 23°38' E 326.15'
N544-N545	S 83°07' E 473.24'
N545	S 78°03' E 23.00'
B211-B210	S 19°44' W 124.15' RADIUS 1392.39'
B210-B209	N 67°19' W 15.00' RADIUS 1377.39'
B209-B208	S 23°28' W 40.00' RADIUS 15.00'
B208-B207	S 65°43' E 15.00'
B207-B206	S 28°15' W 189.66' RADIUS 1392.39'
B206-N543	N 74°39' W 80.53'
N543-N542	N 79°35' W 399.23'

1. HORIZONTAL DATUM
 2. VERTICAL DATUM
- DEEP CREEK LAKE SURVEY DATA
- HORIZONTAL DATUM = LAMBERT NAD 83 DATUM
 NAD 83 DATUM = FIELD OBSERVATION X COMBINED SCALE FACTOR
 COMBINED SCALE FACTOR = GRID SCALE FACTOR X ELEVATION SCALE FACTOR
 APPROXIMATE COMBINED SCALE FACTOR = 0.999899

DESIGNED BY: SUSAN N. EVANS PERRANCO	APPROVED BY: MORGAN C. FRANCE	REVISIONS:	DATE: 7/17/00	DESIGNED BY: MORGAN C. FRANCE, L.S., P.E.
DRAWN BY: MARGARET A. JORDAN	PROJECT: DEEP CREEK PROJECT BUY DOWN SURVEY	DATE: 10/30/02	STATE OF MARYLAND	10 NORTH THIRD STREET, BALTIMORE, MARYLAND 21550
CHECKED BY: ARWINDY	DATE: 7/12/00 at 9:05	DATE: 11/14/02	DETAILED BY: MORGAN C. FRANCE, L.S., P.E.	334-2305
PROJECT: DEEP CREEK PROJECT BUY DOWN SURVEY	SHEET NAME: DRAWING 3V, ARROWHEAD COVE	SHEET NO.: 3V		

© COPYRIGHT - 2000 BY MORGAN C. FRANCE, L.S., P.E. ALL RIGHTS RESERVED.

SEE SHEET 2

SEE SHEET 4